

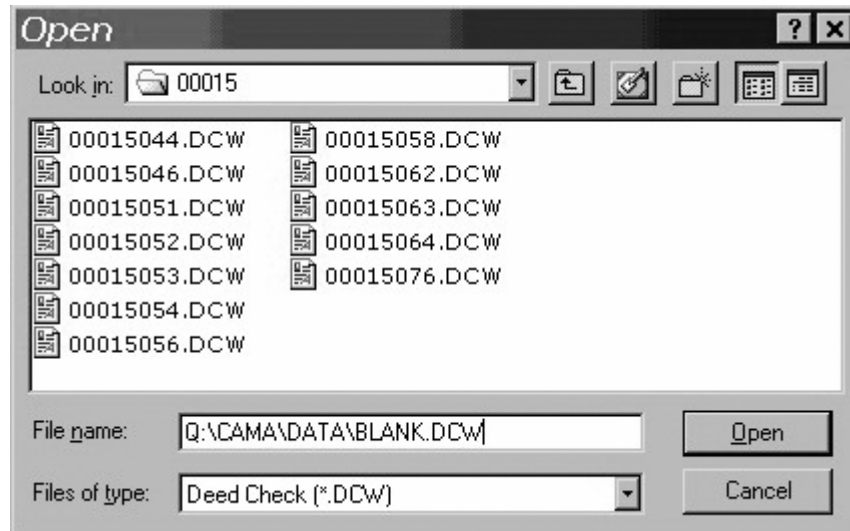
Changing the Default Line Color

In DeedChek 7.0, the default line color is blue. The line color can be changed for an individual sketch, but there is not an option to change the line color for all future sketches, without changing it on a sketch-by-sketch basis.

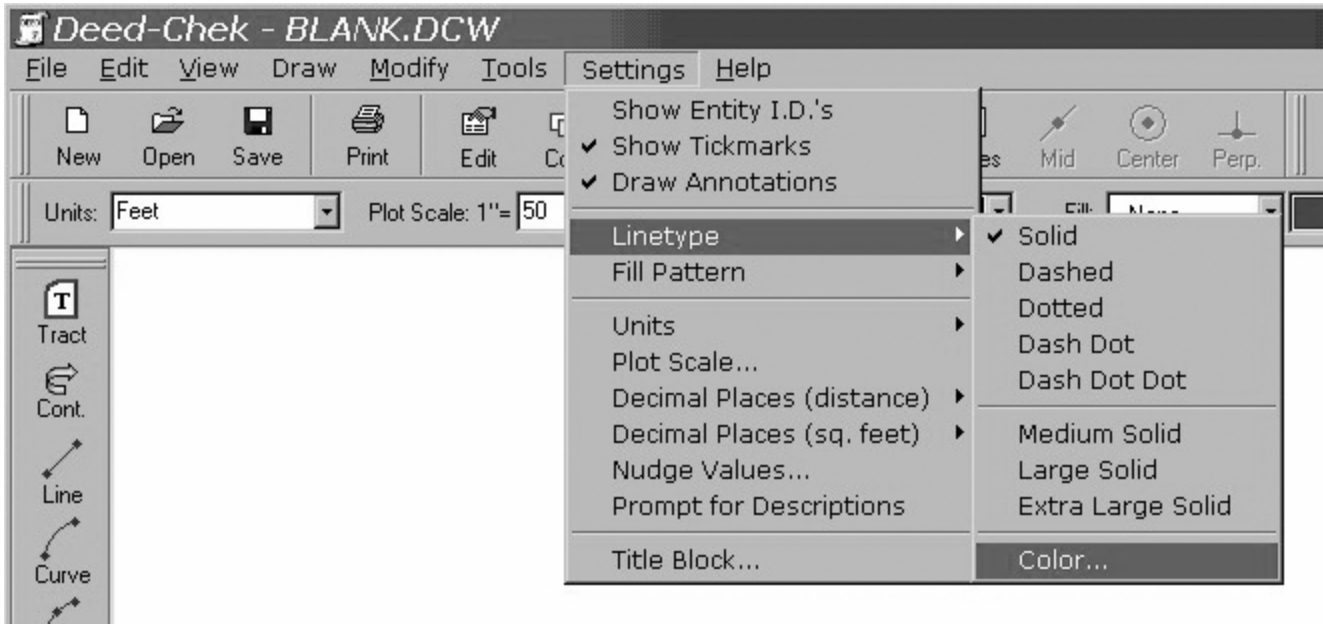
We have found a way to change the default by using the blank sketch file which is used as the basis for new sketches. Changes made here will be carried over to new sketches.

Procedure

- Start DeedChek 7.0.
- Select File / Open from the menu
- In the File name box, enter "Q:\CAMA\DATA\BLANK.DCW"
- Click on Open and the blank sketch file will be opened



- To change the default line color for this sketch, click on Settings / Linetype / Color.



- This will bring up a dialog box that looks like:



- Click on the color you wish to use as the default line color; you will be returned to the sketch area.
- Click on File / Save to save the blank sketch file
- Close DeedChek.

When you create a new sketch via the Assessor's Apprentice and DeedChek, you should now find the default line color as you selected.